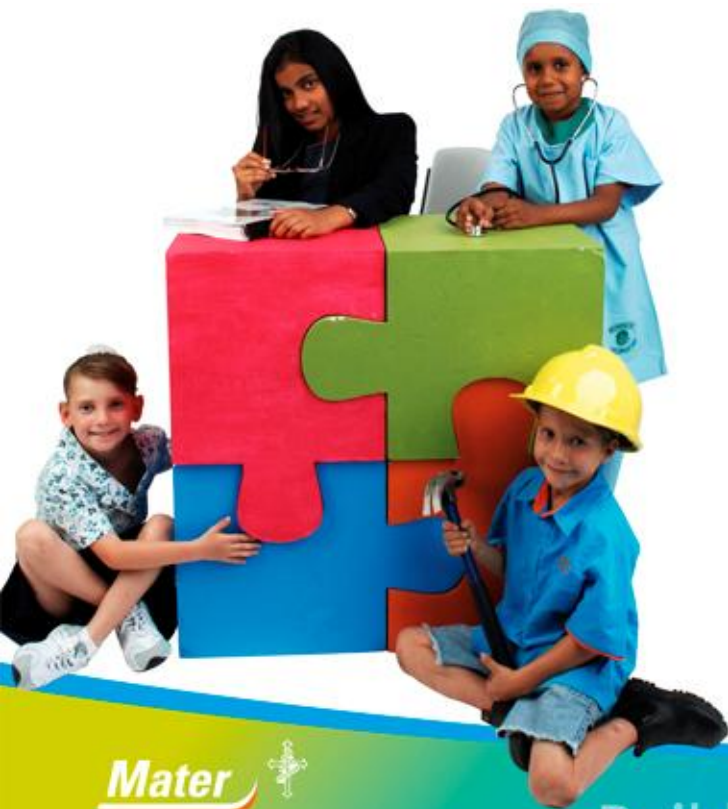


# Planning for the extraordinary – rather than the ordinary



# Queensland Children's Hospital

## The beginnings:-

- Review of Paediatric Cardiac Services 2006 – Professor C. Mellis
- Paediatric Cardiac Services Taskforce

# Mellis Review + Taskforce

Two core recommendations:

- Children with congenital heart disease should be cared for in a tertiary children's hospital
- Queensland would be better served with a single tertiary paediatric hospital

# September 2006 State Election

Government committed to:

- Building a hospital to provide world-class care in a purpose built facility adjacent to the Mater site.
- \$700m for the Project
- Up to 400 beds in stages from 2011
- Transition of the paediatric cardiac program from TPCH to the Mater

# September 2006 State Election

- QCH will have a separate management structure from the Mater and be a part of the Qld Health Public Hospital System
- QCH will provide adolescent health services
- Continued provision of emergency services for the children of Brisbane North
- Clinical Leader

# The QCH Project

- Move paediatric oncology service from Mater to RCH – Sept 2007
- Transition paediatric cardiac program from TPCH to Mater Children's - March 2008
- Develop plans for the Queensland Children's Hospital
- Lead the integration of the paediatric services of TPCH, Mater Children's and Royal Children's into a new separate entity
- And, on the seventh day.....

# Oncology Service move

- To accommodate cardiac service ( 19 beds) at MCH need to move Mater Paediatric Oncology Service to RCH

# Transitioning the Paediatric Cardiac Program

- Requires capital building program at Mater Children's
  - 19 ward beds
  - 9 PICU / HDU beds
  - Accommodation for 32 staff
- To accommodate the cardiac ward, the Mater paediatric oncology service will move to RCH

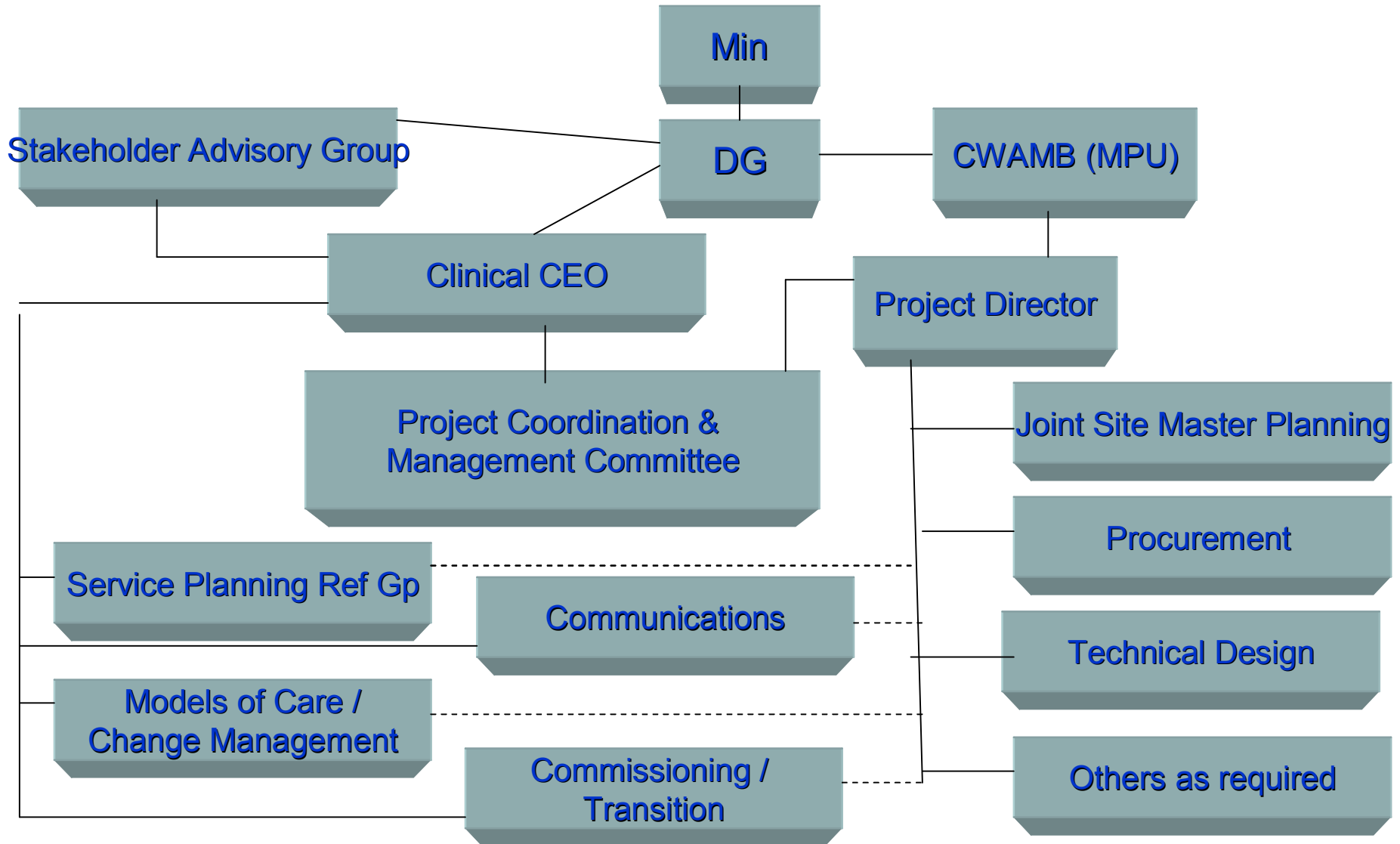
# Transitioning the Paediatric Cardiac Program

- Service Plan – complete
- Functional design brief – almost complete
- Proceeding to schematic design
- Project to be delivered March 2008

# QCH Planning

- Clinical CEO + core members of Project Team now in place
- Project governance

# QCH Project Governance



# QCH Planning

- One of three major hospital projects
  - Kate Copeland, Major Projects Unit, Capital Works and Asset Management Branch

# QCH Planning

- Website to be launched soon
- Community Engagement Framework
  - establishment of a
    - Parent Advisory Council
    - Youth Council

# QCH Planning

- Health Service Planner engaged
- Service Planning groups commenced meeting this month
- Service Plan to be finalised by September 2007

# QCH Governance

- DG has established a Governance Committee to determine a governance model for the QCH